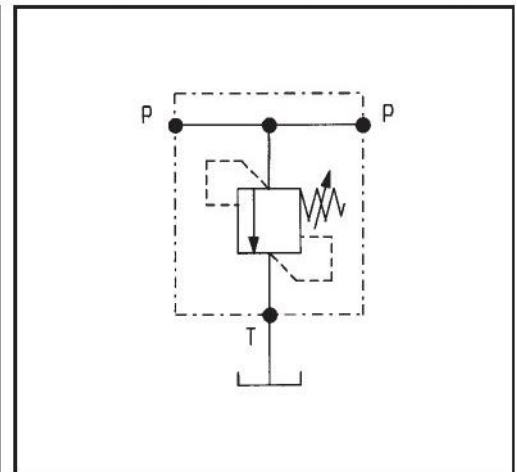
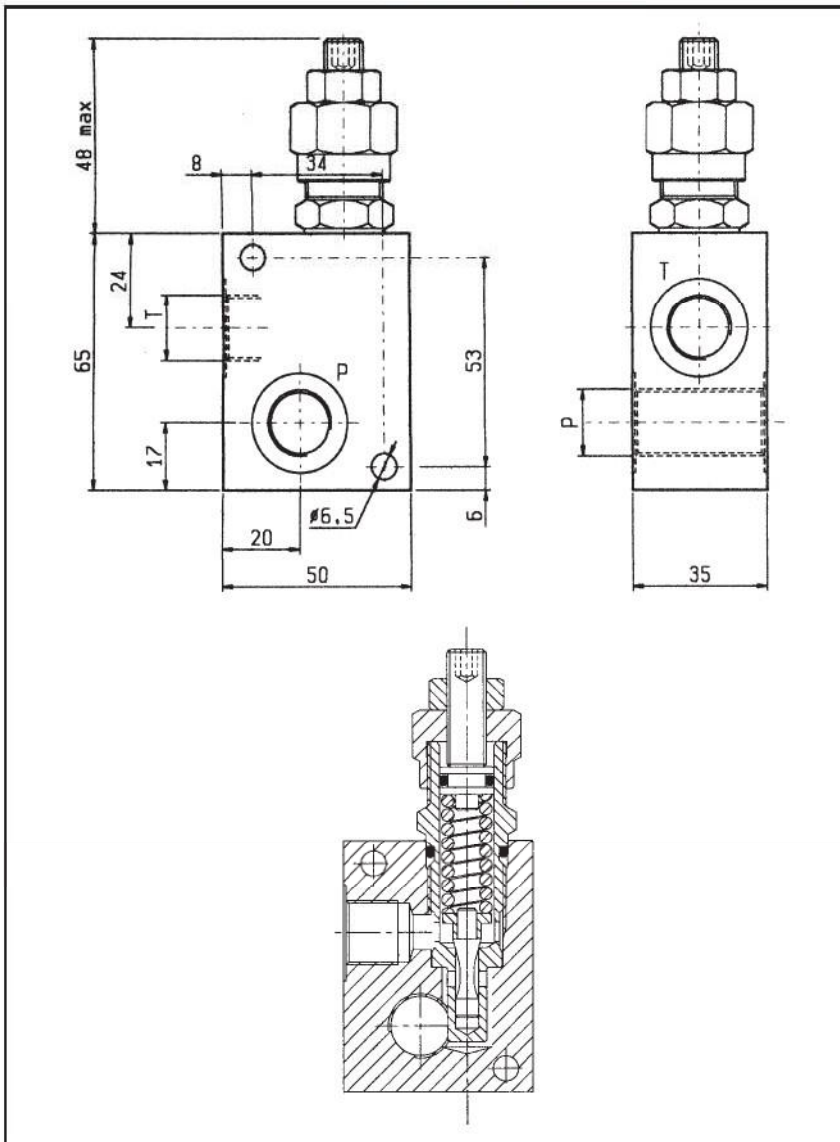


VSC-30

05.13.01 - X - Y - Z

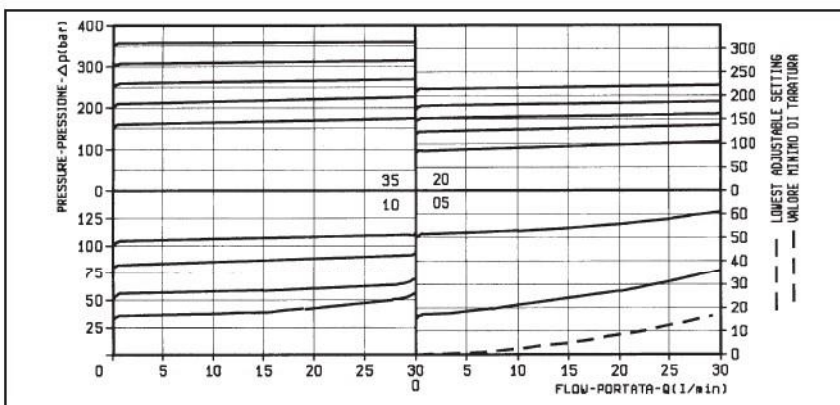


DATI TECNICI / TECHNICAL DATA

Pressione di lavoro max. 350 bar
Max. working pressure

Portata max. 30 l/min
Flow max.

Peso 0.41 kg
Weight



X

**REGOLAZIONI
ADJUSTMENTS**

03

vite esterna
esagono incassato
leakproof hex.
socket screw



04

volantino
e dado
handknob
and locknut



cappello per piombatura
sealing cap
codice / ordering code
03.05.01.003



MOLLE / SPRINGS

Z	Campo taratura min - max bar Adj. press. range bar	Incremento press. bar / giro vite Press. increase bar / turn	Taratura standard bar (Q = 5 l/min) Std. setting bar (Q = 5 l/min)	Cod. ordinazione Ordering code	Colore Colour
05	5-50	12	50	03.51.01.077	nero black
10	30-100	24	100	03.51.01.076	blu blue
20	50-210	47	200	03.51.01.075	verde green
35	100-350	82	350	03.51.01.059	giallo yellow

Y

ATTACCHI / PORT SIZE

P - T

02

G 3/8

03

G 1/2

04

G 1/4