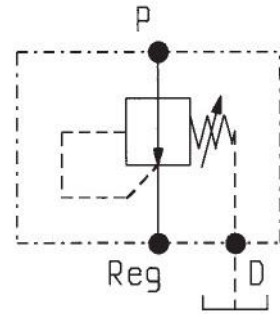
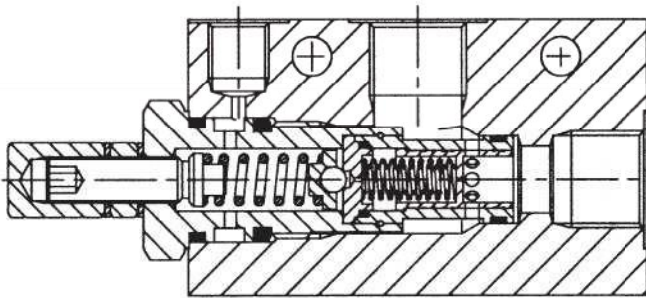
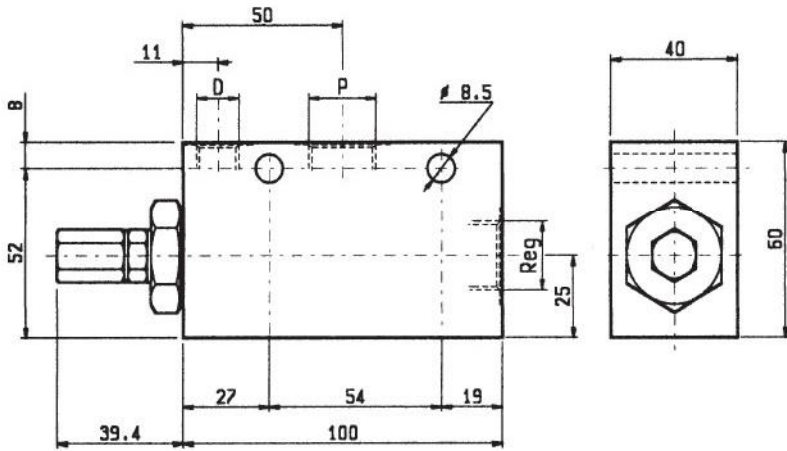


VRPC-150

05.90.33 - X - Y - Z



DATI TECNICI / TECHNICAL DATA

Pressione di lavoro in entrata P max. 250 bar
Max. inlet pressure

Pressione in uscita regolata max. 210 bar
Max. regulated pressure

Portata max. 120 l/min
Flow max.

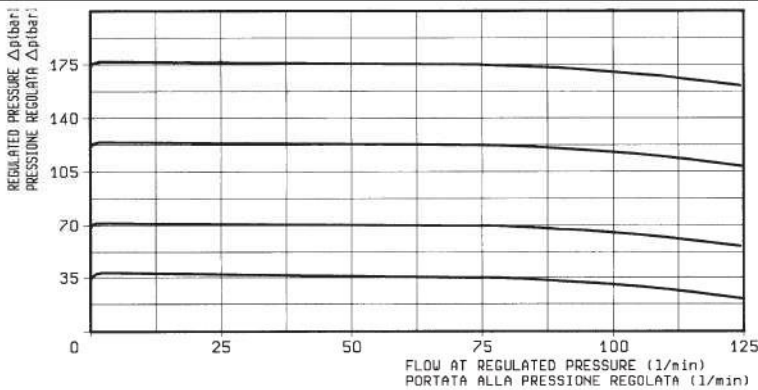
Peso 0.95 kg
Weight

Trafilamento: circa 0.003 l/min al 90% della pressione di taratura standard.

Max. leakage: 0.003 l/min at 90% of standard pressure setting.

Classe di pulizia dell'olio: almeno 18/14 ISO 4406 (9 NAS-1638).

Fluid cleanliness class: 18/14 ISO 4406 (9 NAS-1638) or better.



X

REGOLAZIONI ADJUSTMENTS

03

vite interna
esagono incassato
leakproof inner hex.
socket screw



04

volantino
e controvolantino
handknob
and locknut



MOLLE / SPRINGS

Z	MOLLE / SPRINGS				
	Campo taratura min - max bar Adj. press. range bar	Incremento press. bar / giro vite Press. increase bar / turn	Taratura standard bar (Q = 5 l/min) Std. setting bar (made at 5 l/min)	Cod. ordinazione Ordering code	Colore Colour
20	20-210	35	100		

Y

ATTACCHI / PORT SIZE

Y	ATTACCHI / PORT SIZE	
	P-REG	D
03	G 1/2	G 1/4
04	G 3/4	G 1/4