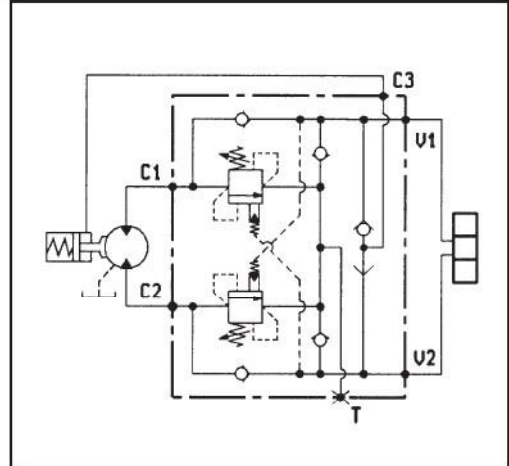
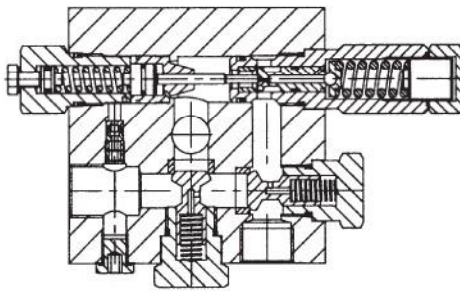
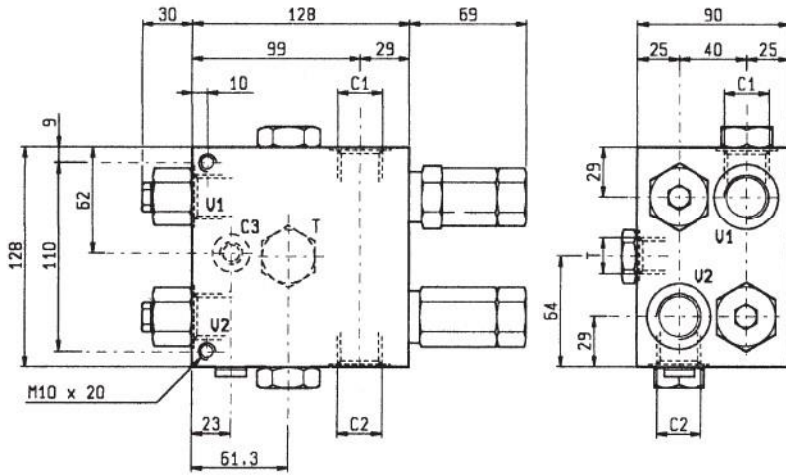


VAA-B-SICN-ST-VF-150

05.71.45 - X - Y - Z



DATI TECNICI / TECHNICAL DATA

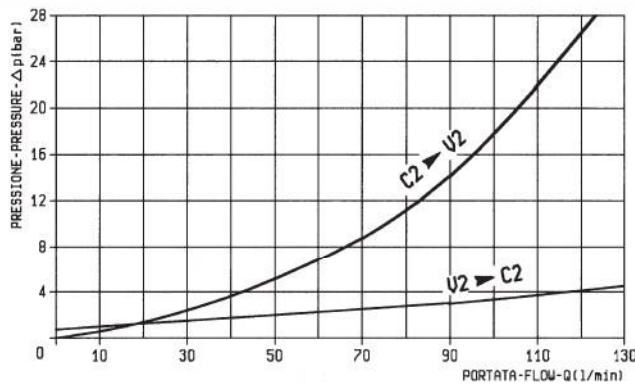
Pressione max. 350 bar
Max. pressure

Portata max. 120 l/min
Flow max.

Taratura della valvola: almeno 1.3 volte superiore alla pressione indotta dal carico

Pressure setting: at least 1.3 times the load induced pressure

Peso 5.70 kg
Weight



X	RAPPORTO DI PILOTAGGIO PILOT RATIO
03	7.6 : 1
10	3 : 1

Z	MOLLE / SPRINGS				
	Campo taratura min - max bar Adj. press. range bar	Incremento press. bar / giro vite Press. increase bar / turn	Taratura standard bar (Q = 5 l/min) Std. setting bar (made at = 5 l/min)	Cod. ordinazione Ordering code	Colore Colour
20	60-210	68	150	03.51.01.152	verde green
35	100-350	105	150	03.51.01.142	giallo yellow

Y	ATTACCHI / PORT SIZE		
	V1-V2-C1-C2	C3	T
04	G 3/4	G 1/4	G 1/2