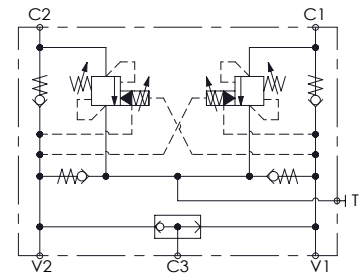
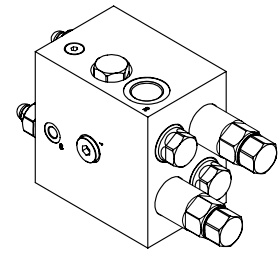
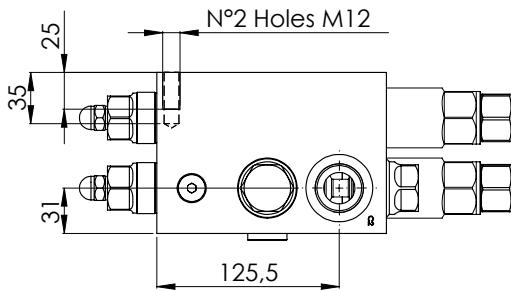
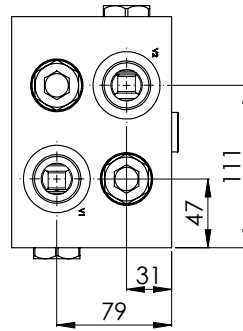
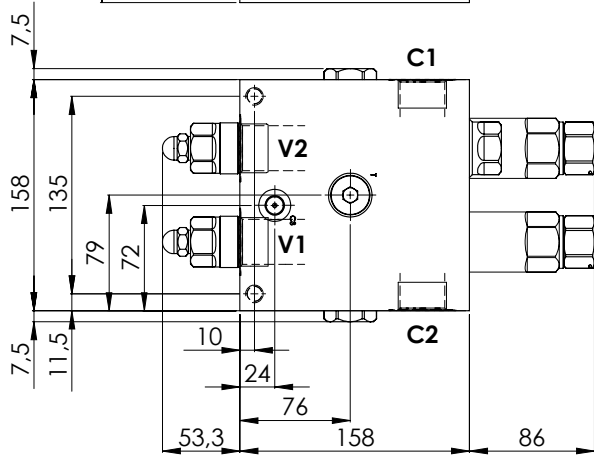
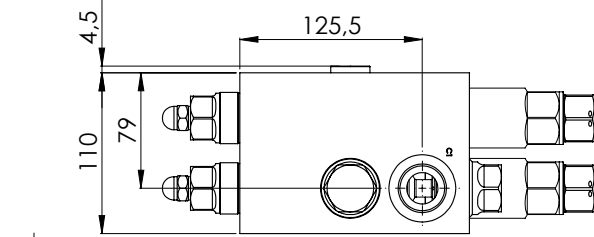


MOTION CONTROL

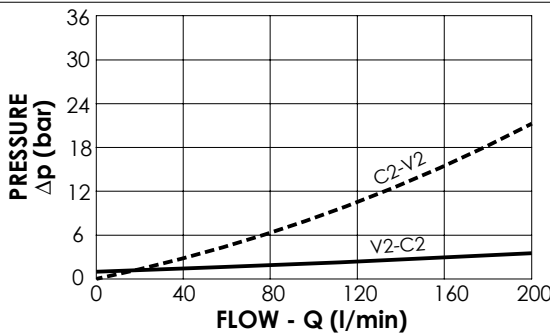
# MNDN-200-LLPV

SOFT STOP  
DUAL SETTING  
WITH BRAKE RELEASE



## SPECIFICATIONS

Max. operating pressure:	300 bar
Rated flow:	200 l/min
Manifold:	Aluminium
Weight:	9,81 kg



## NOTES

Setting: at least 1.3 times the load induced pressure

## ORDERING CODES

Description	Pilot ratio	Main ports size	Standard setting (bar, Q=5 l/min)	Adjust. range (bar)	Pressure increase (bar/turn)
MNDN-200-LLPV-08-G10-N300	8:1	V1,V2,C1,C2 : G1" T : G1/2"; C3 : G 1/4"	Start: 300 Brake: 120	120-300	65